

Little House on the Prairie® Walnut Grove

BY KATHY HALL



Four Patch Frolic Quilt
designed by: **Jean Ann Wright**
Quilt Size: **54" x 63"**
andoverfabrics.com



LITTLE HOUSE ON THE PRAIRIE® and associated character names and trademarks are owned and licensed by Friendly Family Productions, LLC. All rights reserved. ©2015 Friendly Family Productions, LLC

andover



makower uk
The Henley Studio

Free Pattern Download Available

1384 Broadway New York, NY 10018
Tel. (800) 223-5678 • andoverfabrics.com

Four Patch Frolic Quilt



Introducing Andover Fabrics new collection:

Little House on the Prairie® – WALNUT GROVE by Kathy Hall

Quilt design by Jean Ann Wright

Quilt finishes 54" x 63"

42 Blocks: 9" x 9"

Simple blocks with four patches in each are set together to fool the eye. The squares and rectangles look interwoven so the blocks disappear. Follow the fabric combinations in the quilt photograph, or come up with your arrangement of light and dark fabrics.

Fabric Requirements

		Yardage	Fabric
10" Squares Packet	blocks	1 packet	
Fabric A	binding	½ yard	7953-R
Backing		3½ yards	7982-R

Cutting Directions

Note: Read assembly directions before cutting patches. All measurements are cut sizes and include ¼" seam allowances. WOF designates the width of fabric from selvedge to selvedge (approximately 42" wide).

10" Squares Packet

Read Step 1

Fabric A

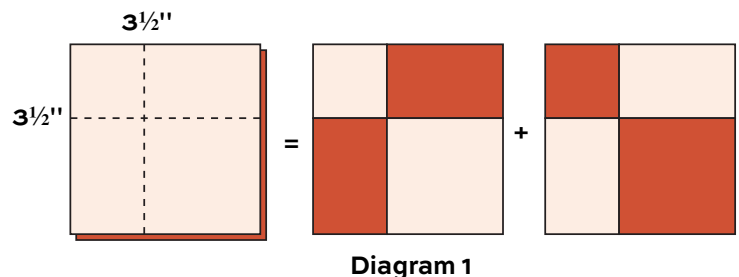
Cut (6) strips binding 6½" x WOF

Backing

Cut (2) panels 36" x 60", pieced to fit quilt top with overlap on all sides

Making the Quilt

1. Select 1 light and 1 dark 10" square. Place one square on top of the other, edges matching and right sides facing up. Mark a dot along the top edge that is 3½" from the top left corner (Diagram 1). Mark a dot along the left edge that is 3½" down from the top left corner. Cut a vertical line from the top dot to the bottom of the squares. Without moving the fabric, cut a horizontal line from the left side dot to the right side. Rearrange the patches so 1 block has 2 light squares and 2 dark rectangles. The second block is a mirror image with 2 dark squares and 2 light rectangles. Join the patches to make each block. They should measure 9½" from edge to edge. Join pairs of light and dark squares in any combination you choose to make a total of 42 blocks.

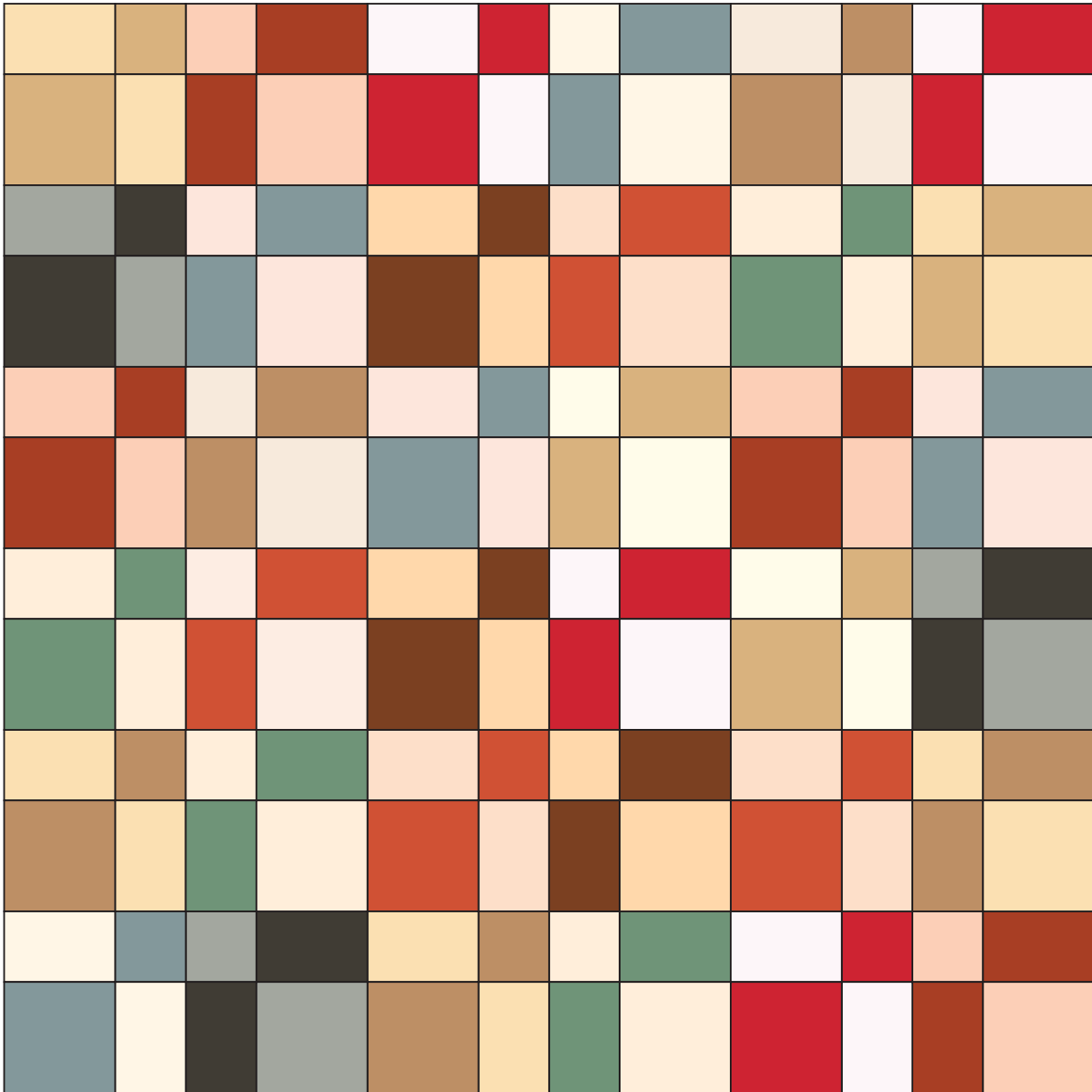
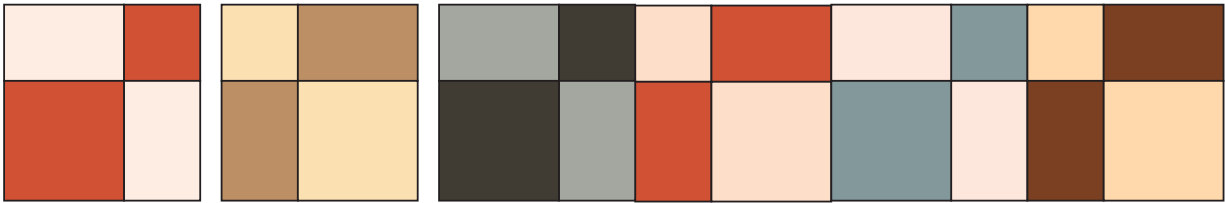


2. Referring to the Quilt Diagram, arrange the blocks in 7 rows of 6 blocks each. Be sure to rotate the blocks to match the design. Join the blocks into rows and join the rows.

Finishing the Quilt

3. Layer the quilt with batting and backing and baste. Quilt around the block patches and quilt a motif of your choice inside the patches. Or quilt an overall pattern. Bind to finish the quilt.

Four Patch Frolic Quilt



Quilt Diagram

Little House on the Prairie Walnut Grove



BY KATHY HALL



7953-N



7953-R



7953-T



7954-N



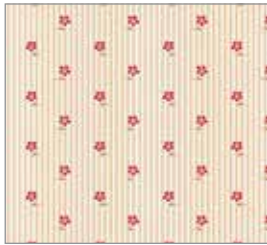
7954-RN



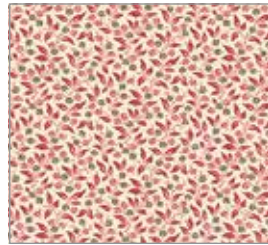
7954-TK



7955-N



7956-N



7957-NR



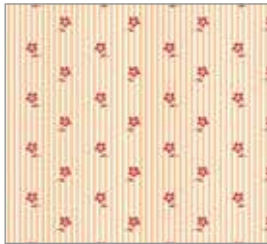
7958-NL



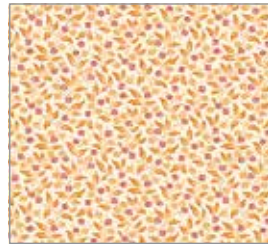
7982-L



7955-R



7956-RL



7957-RO



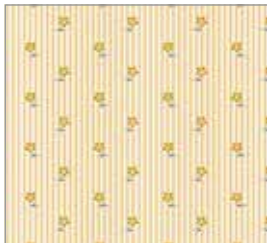
7958-RL



7982-R



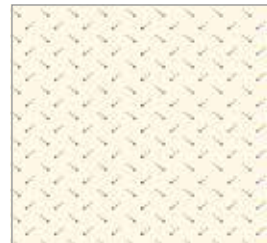
7955-T



7956-TL



7957-TK



7958-TL

All fabrics are used
in quilt pattern

Fabrics shown are
25% of actual size.

andover

•
• makower uk
• *The Henley Studio*
•

Free Pattern Download Available

1384 Broadway New York, NY 10018
Tel. (800) 223-5678 • andoverfabrics.com