

Pocketed Centerpiece Mat 27" square



Centerpiece Base Mat:

7/8 yd main fabric, large blue print

7/8 yd backing, birds on blue

cut each of the above to a 29" square

7/8 Fusible Thermolam Plus

cut one 29" square

cut one 6 1/2" square

Centerpiece Pockets:

5/8 yd pocket fabric, flowers on tan

cut one strip – 7" x 44" for diagonal pockets

subcut two - 7" squares. Cut squares on the diagonal

cut one strip - 7" x 44"

subcut four - 6 1/2" x 6 1/2" squares for middle pockets

subcut one - 6 1/2" x 6 1/2" square for center square



3/4 yd lining/cuff pocket fabric, red linen

cut one strip – 8" x 44" for diagonal pocket lining/cuff

subcut two - 8" squares. Cut squares on the diagonal

cut one strip – 7" x 44" for middle pocket lining/cuff

subcut four - 6 1/2" x 7 1/2"



cut three - 2 1/2" x 44" strips for binding

Eight buttons, optional

Use 1/4" seams for this project.

Creating Pockets:



Fuse 6 1/2" Thermolam Plus square to back of center square.



With right sides together, align top of a diagonal pocket with top of a diagonal lining/cuff, centering the top and aligning bottom points.

Pin and stitch at top edge. Press seam towards diagonal pocket.



With right sides facing out, bring diagonal pocket point to point of lining, forming a cuff. Press.

Trim excess fabric along edge of pocket.

Pin, then baste sides using a 1/8" seam.

Stitch in the ditch at seam between cuff and top of pocket.

Repeat with remaining diagonal pockets and lining/cuffs



With right sides together, align top of a middle pocket with top of a lining/cuff.

Pin, then stitch at top edge. Press seam towards top of pocket.

With right sides facing out, bring middle pocket to bottom of lining, forming a cuff. Press.

Pin, then baste sides using a 1/8" seam.

Stitch in the ditch between cuff and top of pocket.

Repeat with remaining middle pockets and lining/cuffs.

Assembling the Pockets:



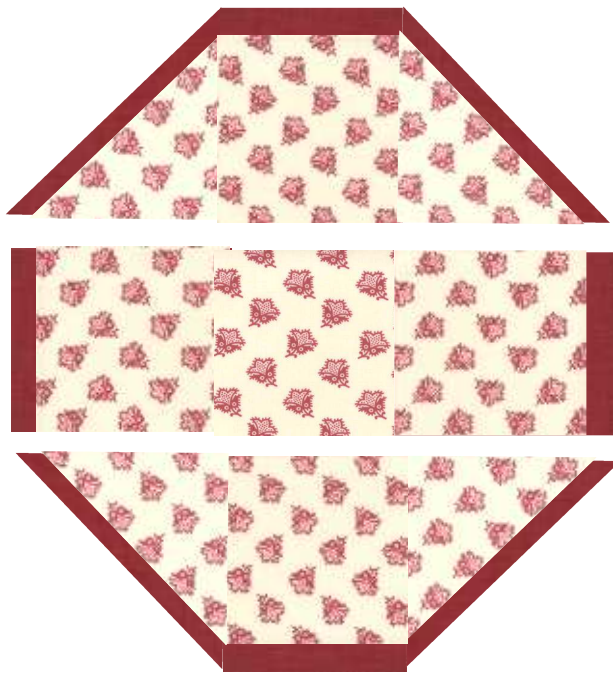
With right sides together, align bottom edges and right sides of a diagonal pocket and a middle pocket. The diagonal pocket will extend about 1/4" above the top. Pin, then stitch as shown. Press seam towards middle pocket. Repeat for other side.

Repeat with two more diagonal pockets and a middle pocket.



With right sides together, align right edge of a middle pocket with right edge of center square. Pin, then stitch. Repeat with other side.

Press seams away from center square.



Pin, then stitch top row to center row. Be sure to align the seams.



Press seam away from center.

Pin, then stitch bottom row to center row, again aligning the seams.



Press seam away from center.

Do not trim the excess fabric that goes beyond the diagonal pockets. Instead, bring the excess to the back and hand stitch to back.

You have created the pocket unit.

Centerpiece Base:

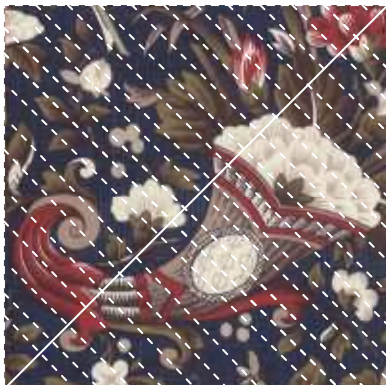
Fuse Thermolam Plus to wrong side of backing. Place main fabric on top of Thermolam. Pin all layers together or, easier yet, use adhesive spray to adhere main fabric to Thermolam. (Follow instructions on the spray can.)



Draw a chalk line from one corner to opposite corner.

Using a walking foot, quilt on the chalk line using a large 3 or 3.5 stitch.. Turn fabric in opposite direction. Attach the side bar to the walking foot and position it 1" to 1 1/2" away from stitching. Stitch. Turn mat. Continue stitching and turning until mat is completely stitched in one direction.

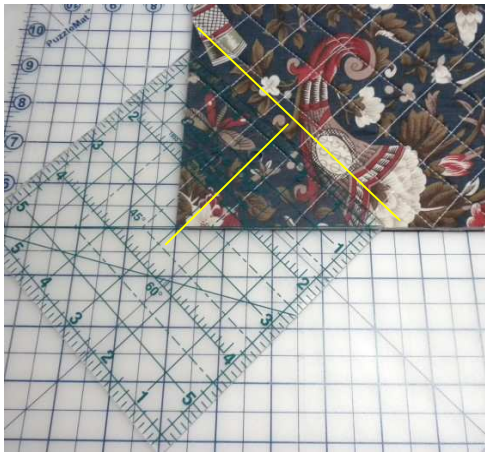
By turning the mat each time before you stitch the next line, the finished mat will be more aligned.



Draw a chalk line going diagonally in the other direction, forming a cross-hatch.

Stitch as above.

When stitching is complete, trim mat to a 27" square.



Trim corners of the mat on the diagonal. Do this by placing, in a corner of the mat, a ruler 3" from corner and sides (see yellow lines). A 6" square up ruler works great for this.

Trim away corner.

Repeat for other three corners.



Center, then pin pocket unit to centerpiece base. The pocket unit will be approximately 4" from outer edges of mat.

Draw a chalk line diagonally in the center square (as shown with the diagonal black dashed line). Crosshatch the center square the same way the centerpiece base was quilted.

Quilt-in-the-ditch along seams of pocket mat, (as shown with straight dashed lines) forming the pockets.

Optional Buttons:

Sew a button to each point where a diagonal pocket intersects with a middle pocket.

Binding:

Trim selvages from binding strips. Miter or sew the short ends of the strips together.

Press strip in half lengthwise, wrong sides together.

On one short end, press fabric under 1/4" or use whatever method you prefer for overlapping the binding at the end.

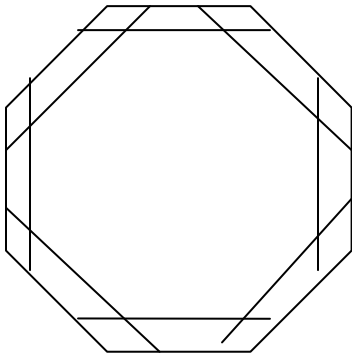
Since the corners are not a 45-degree angle, sewing on the binding is a little different. See the next page for instructions on sewing binding for a 90-degree angle.



Feel free to share this pattern with others as long as you keep Fabric Buffet's logo and web address listed here.

www.fabricbuffet.com

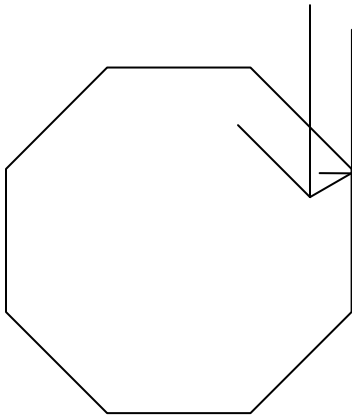
Sewing binding for a 90-degree angle



Draw a stitching line $\frac{1}{4}$ " from the outer edge of the mat.
(Drawing lines in the picture do not represent an accurate $\frac{1}{4}$ ".)
Notice how the lines intersect at the corners.

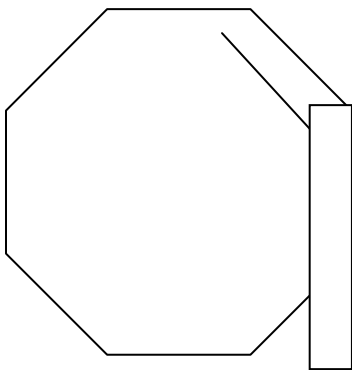
Starting on side of mat, align raw edges of binding to raw edges of mat.

When you approach a corner, stop sewing exactly where the two lines intersect and backstitch.



Turn the mat so that the next side is parallel to sewing foot.
Fold binding straight up as far as the stitching will let you so that it makes a straight line with the raw edge of the mat.

← Insert a pin.



← Fold the binding down toward you as far as the pin will let you.

Continue stitching on the binding, repeating the above steps when reaching the intersection of the drawn line.

As you approach the beginning of the binding, cut binding strip leaving enough length to overlap the beginning or use whatever method you prefer to finish the binding. Bring binding to back and blind stitch in place by hand, mitering corners as you come to them.

Optional Pocketed Centerpiece Mat



This version uses the Daily Grind Coffee Cup fabric for the main mat and the recipes are cut from My Farmhouse Kitchen craft panel. The red and blue fabrics are sold out and were only used for a Quilt Club Challenge in which three crayons were drawn, site unseen, and then a project made from the colors; hence the red and blue fabrics on the mat.

Instead of the red, you could substitute the brown Coffee Beans fabric from Daily Grind or a fabric from your stash. After selecting a color for the center, select a complimentary binding fabric.

This mat is created in the same way as the **Pocketed Centerpiece Mat** except for the recipes and labels added in the center. Follow the instructions for **Creating Center Mat Pockets**. Before **Assembling the Pockets**, follow the direction below.

From a My Farmhouse Kitchen panel, cut $\frac{1}{4}$ " around four of the recipes and $\frac{1}{4}$ " around four recipe labels.

At the top and bottom of the recipes, press under $\frac{1}{4}$ ". Pin a recipe $1\frac{1}{2}$ " from the top of a middle pocket. Zigzag along top and bottom of recipe. If necessary, trim sides of pocket so that it again measures $6\frac{1}{2}$ " x 7". Repeat with the remaining three middle pockets and recipes.

Press under $\frac{1}{4}$ " on all sides of the recipe labels. Pin a label 1" from top of a diagonal lining/cuff pocket. Zigzag around all outer edges of label. Repeat with remaining three diagonal lining/cuff pockets and labels.

Continue **Assembling the Pockets** and follow the remaining directions for the mat.

Turn the leftover pictures from the panel into hot pads by adding Insul-bright for the lining and adding a backing fabric. If desired, sew on leftover recipes from the panel to the backing before assembling the hot pads.